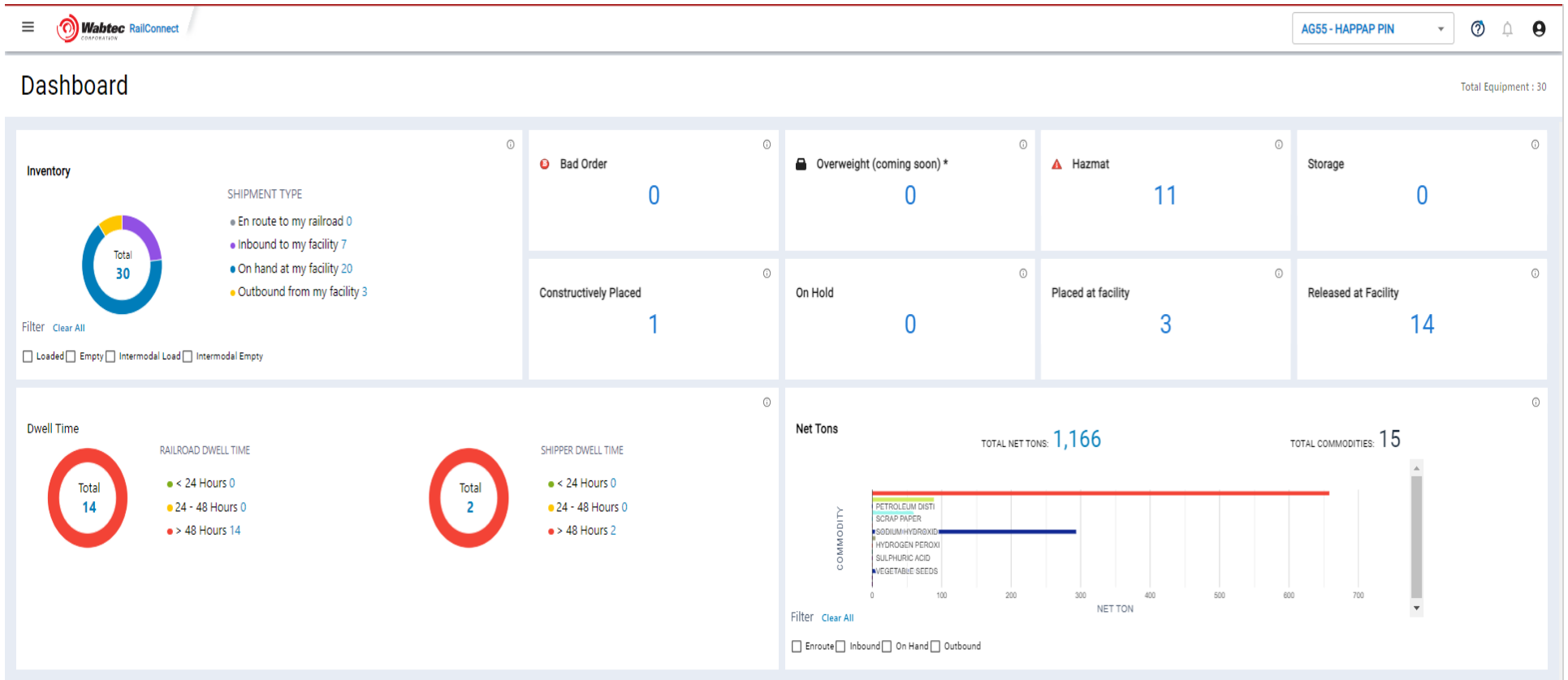


RVP – Dashboard

When logging on to RVP, users will be greeted by the Dashboard shown below. This dashboard provides users with real-time data on train movement, car locations, and dwell time. It is also designed to be intuitive and easily navigated. Users can access information previously unavailable to them and use the available filters to view the data in a manner that will assist with their business needs, drilling down to view detailed insights into their rail traffic.

This dashboard is also mobile-friendly, providing users with the ability to monitor their rail business from anywhere.

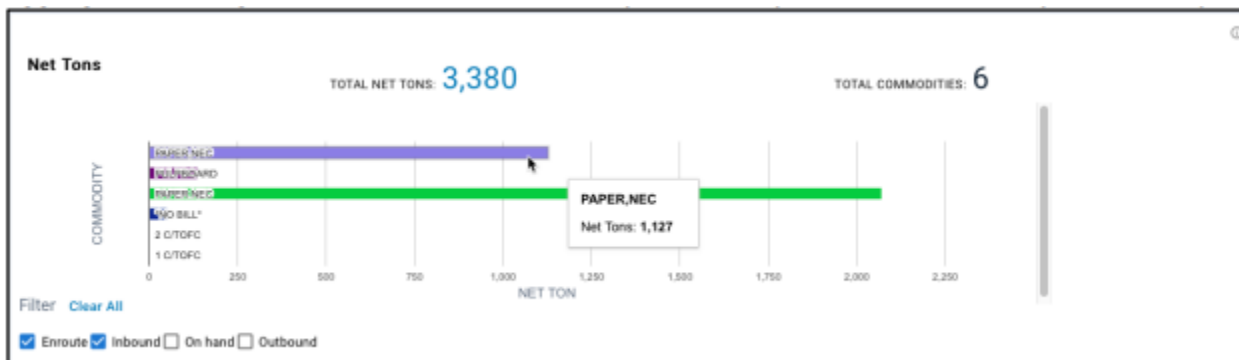
All numeric values displayed on the dashboard are active links and allow users to drill down to the specific data that they would like to view.



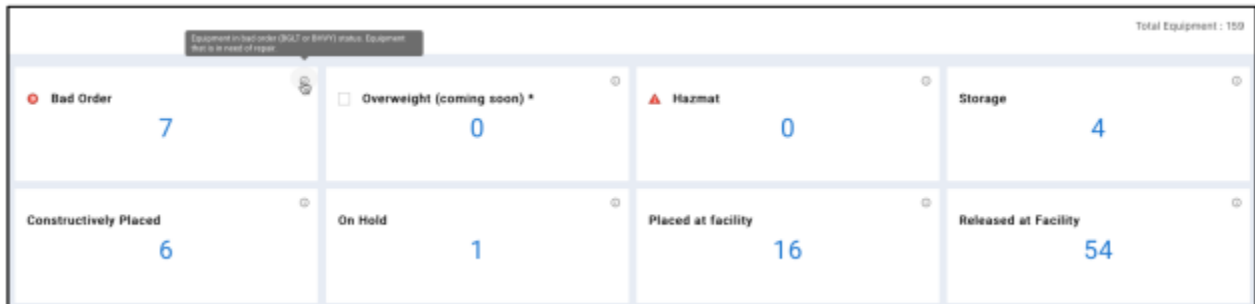
1. The inventory and net tons widget now have built-in filters.



2. Net Tons has been broken out to show the individual commodities. This can now be filtered on the dashboard by shipment types to help shippers identify specific tonnage for a commodity in their pipeline to plan better. You can also hover your cursor over a commodity to see the aggregated tonnage. Users can also click on any commodity to drill down directly in inventory.



3. The card section brings critical information directly to the user to make informed decisions. “Placed at Facility” and “Release at Facility” have been added. Overweight will not show any data but will be added in a future update. All numeric values will drill directly into inventory and filter based on the card.



4. A new Key Performance Indicator (KPI) section has been added to visualize Dwell Time. This KPI displays separate graphics to provide users with the dwell time on the railroad as well as the dwell time at their facility.

