

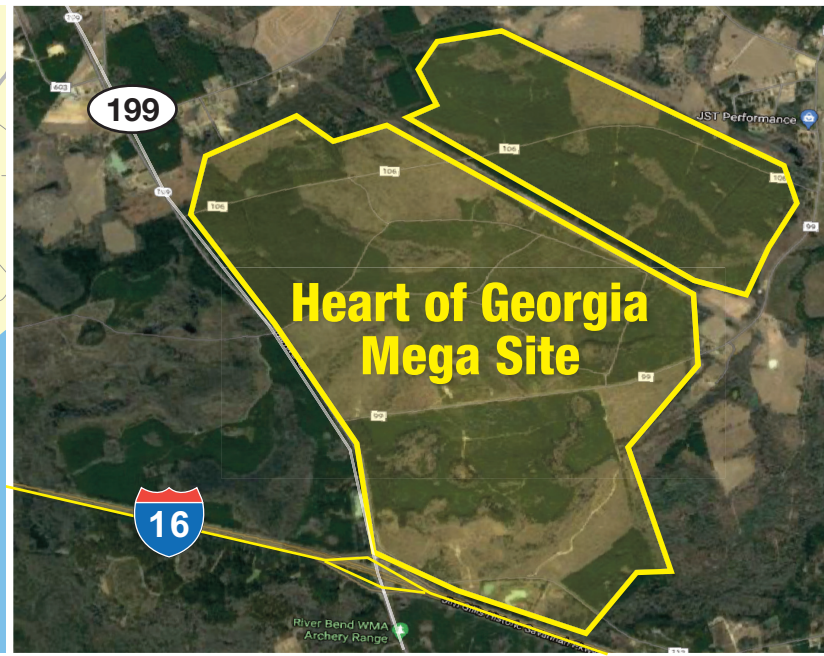
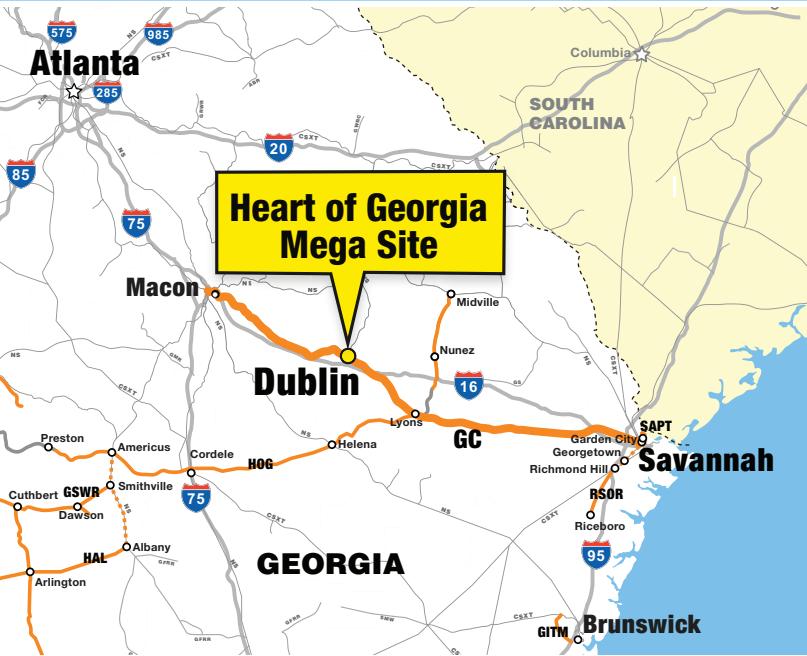


Heart of Georgia Mega Site

Dublin, Georgia

Heart of Georgia Mega Site is a 2,100 acre, multi-certified, Ready for Rail site in Dublin, Georgia.

This greenfield site offers incredible flexibility and customization with over 17 MM SF zoned for industrial, manufacturing and distribution.



Why Choose a “Ready for Rail” Site?

1. Pre-approved for rail access
2. Increased speed to market
3. Reduced upfront development costs

Georgia Central Railway



Site Details

- Rail-served by Georgia Central Railway with access to CSX and Norfolk Southern Class I railroads.
- Dual Certification, GRAD Certified with the state of Georgia and McCallum Sweeney Certified
- Frontage on Interstate 16, providing direct access to Interstates 75 and 95
- Savannah Port: 170 miles; Brunswick Port: 180 miles
- ATL airport: 132 miles; SAV airport: 114 miles

Utilities Available

- ✓ Electric
- ✓ Gas
- ✓ Water
- ✓ Telecommunications

Contact Information

Kevin Phillips

Industrial Development
(904) 900-6290

kevin.phillips@gwrr.com

Visit gwrr.com/sites for more Ready for Rail sites